

# Historical Assessment Trends

PUEBLO COMMUNITY COLLEGE

2016-2020

## **Table of Contents**

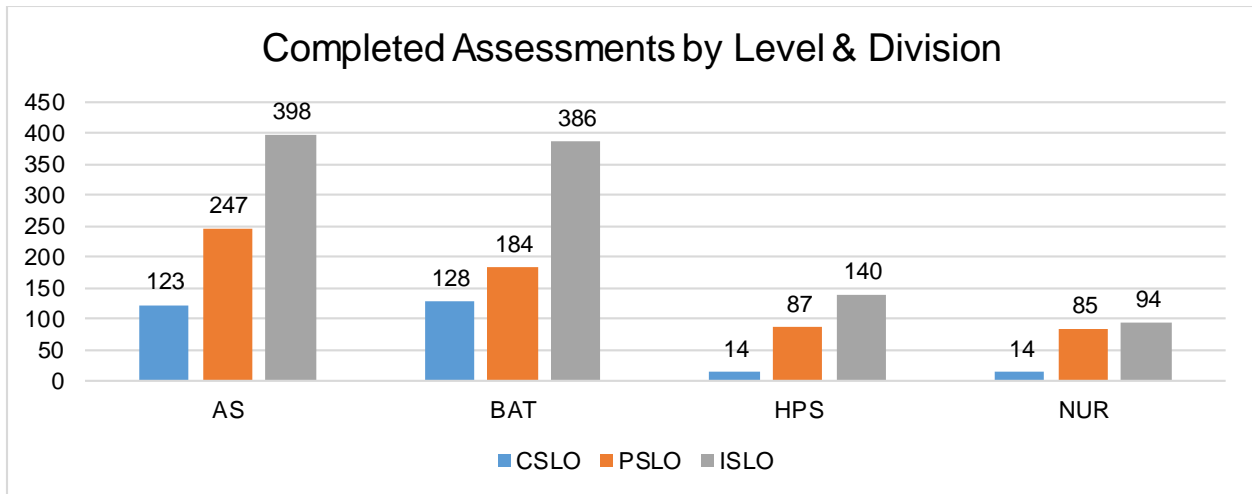
1. Completed Assessments by Level .....	2
A. By Division .....	2
B. By Term .....	2
C. By Division & Term .....	3
1. Arts & Sciences Division .....	3
2. Business & Advanced Technology Division .....	3
3. Health & Public Safety Division .....	4
4. Nursing Division .....	4
2. Scores Collected by ISLO Category .....	5
A. By Division .....	5
B. By Term .....	5
3. Proportion of Scores Collected by FTE .....	6
Appendix A: Completed Assessments by Level .....	7
A1. Completed Assessments by Level & Department .....	7
A2. Completed Assessments by Level, Division & Term .....	8
Appendix B: Scores Collected by ISLO Category .....	9
B1. Scores Collected by ISLO Category & Term .....	9
B2. Proportion of Scores Collected by ISLO Category & Term .....	9
B3. Scores Collected by ISLO Category & Department .....	10
B4. Proportion of Scores Collected by ISLO Category & Department .....	11
Appendix C: Total Rubrics by Department & Level .....	12

## 1. Completed Assessments by Level

*Key Finding: The balance between data collected across levels (course, program, and institution) is equalizing.*

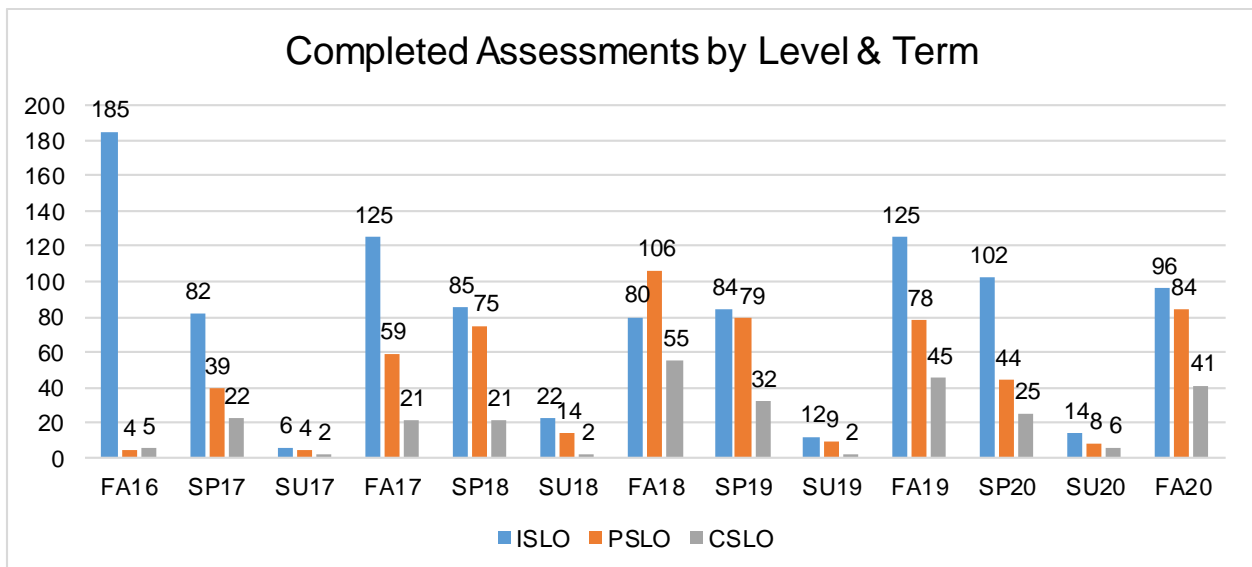
### A. By Division

Refer to Appendix A1 for complete data on total assessments completed & students scored by department and level.



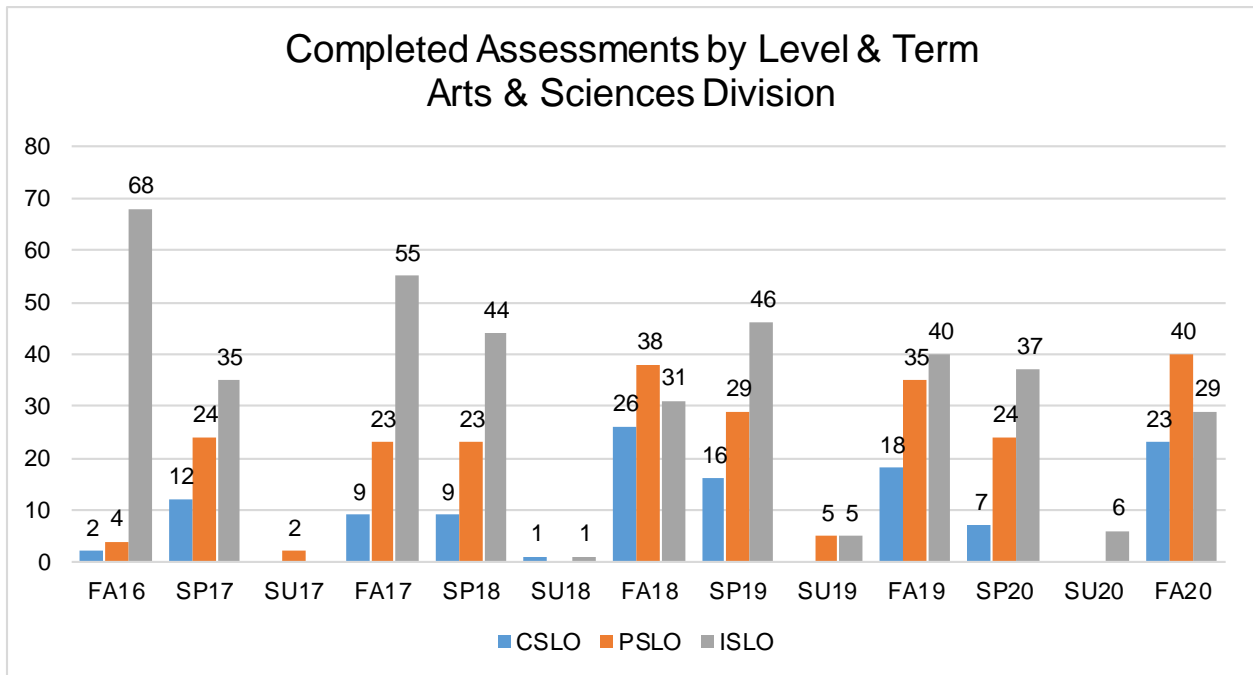
### B. By Term

Refer to Appendix A2 for complete data on total assessments completed by level and term.

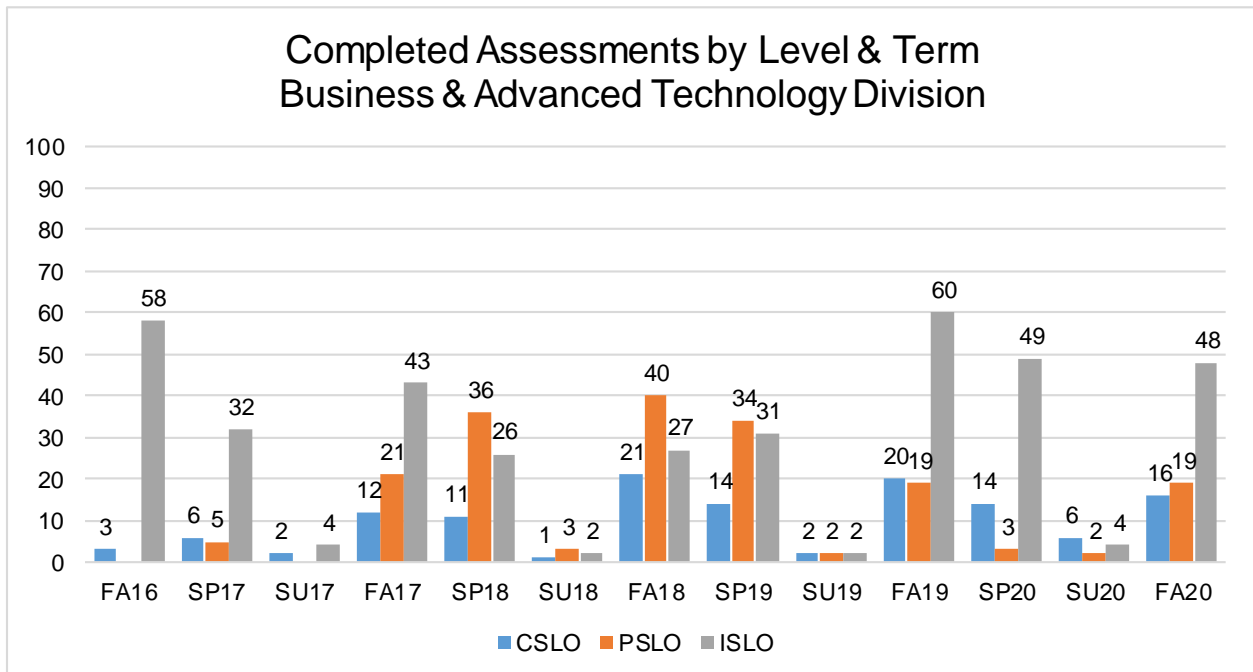


## C. By Division & Term

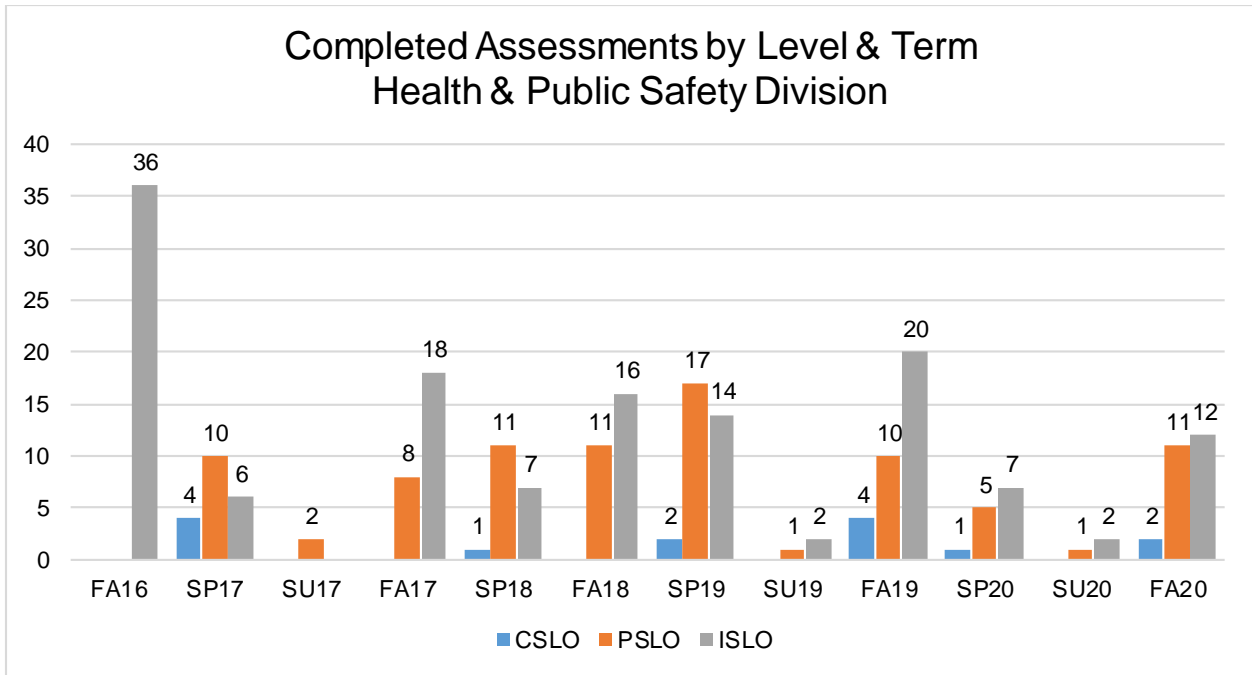
### 1. Arts & Sciences Division



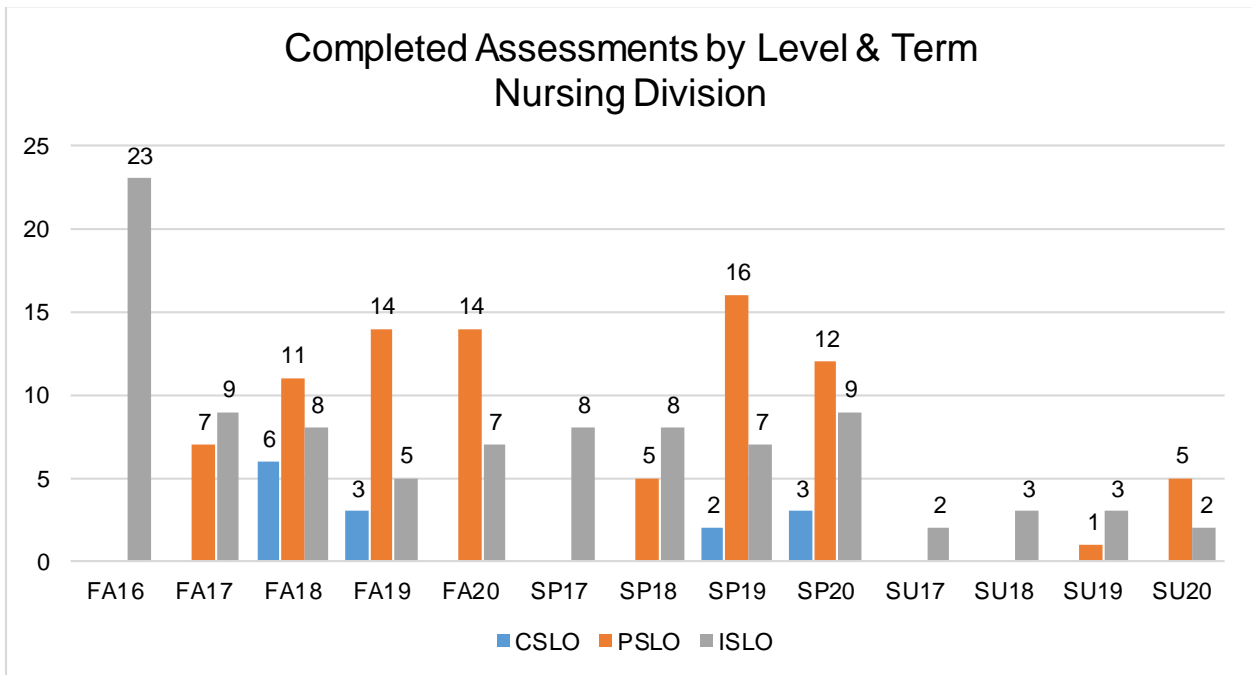
### 2. Business & Advanced Technology Division



### 3. Health & Public Safety Division



### 4. Nursing Division

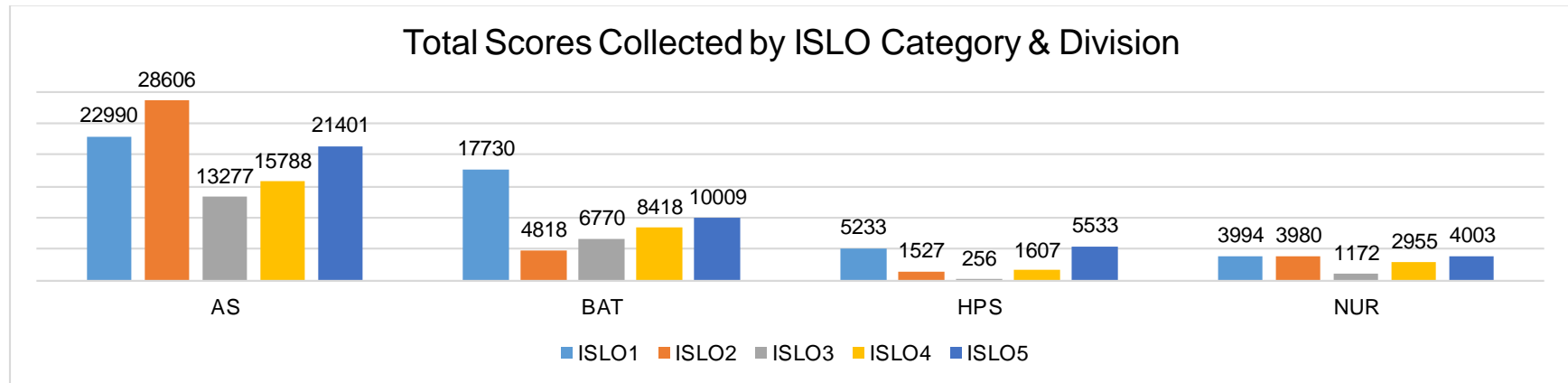


## 2. Scores Collected by ISLO Category

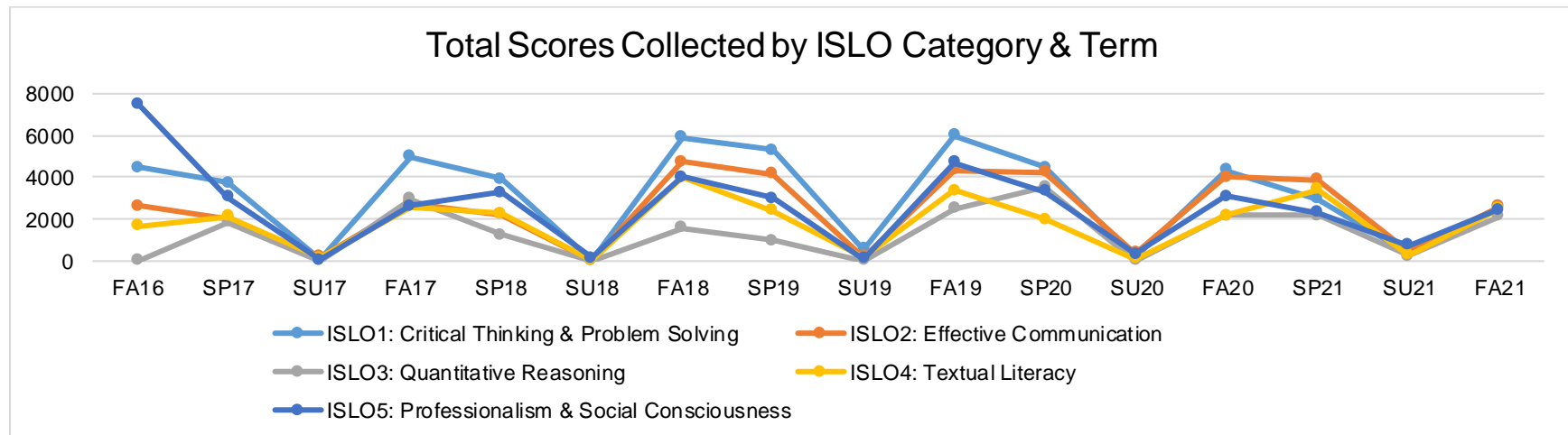
*Key Findings: The data collected on Quantitative Reasoning appears to be low by comparison to the other ISLOs, but it is proportional to relevant coursework offered.*

Refer to Appendix B for complete data on total scores collected by ISLO category, division, and term.

### A. By Division

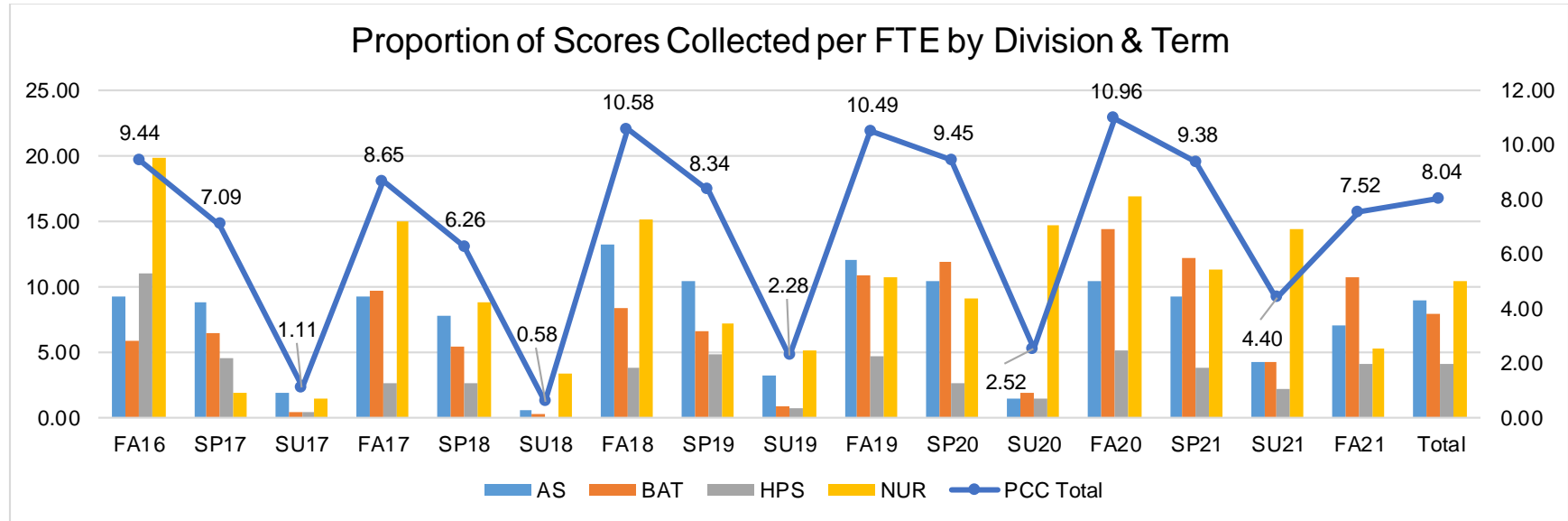


### B. By Term



### 3. Proportion of Scores Collected by FTE

*Key Finding: While at first glance there may appear to be some uneven levels of score collection across divisions, when calculated in relation to FTE, it becomes clear that the distribution of scores is more balanced in proportion to FTE.*



## Appendix A: Completed Assessments by Level

### A1. Completed Assessments by Level & Department

Div/Dept	ISLO	PSLO	CSLO	Total
<b>AS</b>	<b>398</b>	<b>247</b>	<b>123</b>	<b>768</b>
CRJ	8	10	11	29
ECE	46	15		61
ENG	101	96	19	216
FAH	20	63	3	86
MAT	74	41		115
MGD	16	4	24	44
SCI	63	8	28	99
SOC	70	10	38	118
<b>BAT</b>	<b>386</b>	<b>184</b>	<b>128</b>	<b>698</b>
ASE	181	12		193
BUS	62		14	76
CIS	26	16		42
CUA	10	34		44
HIT		20	113	133
MAC	68	28	1	97
WEL	39	74		113
<b>HPS</b>	<b>140</b>	<b>87</b>	<b>14</b>	<b>241</b>
COS	22			22
DEH	45	19	3	67
EMS	9	33		42
FST	6			6
HPR	4	1		5
LEA	2			2
OTA	8	12	8	28
PTA	15	6	3	24
RCA	3			3
RTE	26	16		42
<b>NUR</b>	<b>94</b>	<b>85</b>	<b>14</b>	<b>193</b>
MAP	56			56
NUA	16	8		24
NUR	16	53		69
STE	6	24	14	44
<b>PCC Total</b>	<b>1018</b>	<b>603</b>	<b>279</b>	<b>1900</b>



A2. Completed Assessments by Level, Division & Term

Div/Term	Level	Total	FA16	SP17	SU17	FA17	SP18	SU18	FA18	SP19	SU19	FA19	SP20	SU20	FA20
A&S	ISLO	398	68	36	0	55	44	1	31	46	5	40	37	6	29
	PSLO	247	4	24	2	23	23	0	38	29	5	35	24	0	40
	CSLO	123	2	12	0	9	9	1	26	16	0	18	7	0	23
	All	768	74	72	2	87	76	2	95	91	10	93	68	6	92
BAT	ISLO	386	58	32	4	43	26	2	27	31	2	60	49	4	48
	PSLO	184	0	5	0	21	36	3	40	34	2	19	3	2	19
	CSLO	128	3	6	2	12	11	1	21	14	2	20	14	6	16
	All	698	61	43	6	76	73	6	88	79	6	99	66	12	83
HPS	ISLO	140	36	6	0	18	7	16	14	0	2	20	7	2	12
	PSLO	87	0	10	2	8	11	11	17	0	1	10	5	1	11
	CSLO	14	0	4	0	0	1	0	2	0	0	4	1	0	2
	All	241	36	20	2	26	19	27	33	0	3	34	13	3	25
NUR	ISLO	94	23	8	2	9	8	3	8	7	3	5	9	2	7
	PSLO	85	0	0	0	7	5	0	11	16	1	14	12	5	14
	CSLO	14	0	0	0	0	0	0	6	2	0	3	3	0	0
	All	193	23	8	2	16	13	3	25	25	4	22	24	7	21
PCC	ISLO	1018	185	82	6	125	85	22	80	84	12	125	102	14	96
	PSLO	603	4	39	4	59	75	14	106	79	9	78	44	8	84
	CSLO	279	5	22	2	21	21	2	55	32	2	45	25	6	41
	All	1900	194	143	12	205	181	38	241	195	23	248	171	28	221

## Appendix B: Scores Collected by ISLO Category

### B1. Scores Collected by ISLO Category & Term

ISLO	FA16	SP17	SU17	FA17	SP18	SU18	FA18	SP19	SU19	FA19	SP20	SU20	FA20	SP21	SU21	FA21	Total
ISLO1:	4459	3722	110	4984	3943	35	5906	5300	562	5980	4471	218	4347	2980	344	2586	49947
ISLO2	2646	2054	193	2786	2207	20	4762	4146	220	4352	4256	404	4016	3878	418	2573	38931
ISLO3	28	1834	15	2979	1258		1589	972	0	2488	3533		2191	2185	270	2133	21475
ISLO4	1672	2118	165	2602	2285	35	4003	2400	162	3380	1989	100	2189	3433	311	2503	29347
ISLO5	7524	3064	71	2658	3262	171	4037	2992	119	4702	3350	353	3106	2330	738	2469	40946
<i>Flex</i>													1645	854	76	460	3035
Total	16329	12792	554	16009	12955	261	20297	15810	1063	20902	17599	1075	17494	15660	2157	12724	183681

### B2. Proportion of Scores Collected by ISLO Category & Term

ISLO	FA16	SP17	SU17	FA17	SP18	SU18	FA18	SP19	SU19	FA19	SP20	SU20	FA20	SP21	SU21	FA21	Total
ISLO1	27.31%	29.10%	19.86%	31.13%	30.44%	13.41%	29.10%	33.52%	52.87%	28.61%	25.40%	20.28%	27.43%	20.13%	16.53%	21.09%	27.65%
ISLO2	16.20%	16.06%	34.84%	17.40%	17.04%	7.66%	23.46%	26.22%	20.70%	20.82%	24.18%	37.58%	25.34%	26.19%	20.09%	20.98%	21.55%
ISLO3	0.17%	14.34%	2.71%	18.61%	9.71%	0.00%	7.83%	6.15%	0.00%	11.90%	20.08%	0.00%	13.82%	14.76%	12.97%	17.39%	11.89%
ISLO4	10.24%	16.56%	29.78%	16.25%	17.64%	13.41%	19.72%	15.18%	15.24%	16.17%	11.30%	9.30%	13.81%	23.19%	14.94%	20.41%	16.25%
ISLO5	46.08%	23.95%	12.82%	16.60%	25.18%	65.52%	19.89%	18.92%	11.19%	22.50%	19.04%	32.84%	19.60%	15.74%	35.46%	20.13%	22.67%
<i>Flex</i>	N/A	N/A	N/A	N/A	N/A	N/A	N/A	N/A	N/A	N/A	N/A	N/A	9.40%	5.45%	3.52%	3.62%	1.65%

**B3. Scores Collected by ISLO Category & Department**

Div/Dept	ISLO1	ISLO2	ISLO3	ISLO4	ISLO5	<i>PCC Flex</i>	Total
<b>AS</b>	<b>22990</b>	<b>28606</b>	<b>13277</b>	<b>15788</b>	<b>21401</b>	<b>1668</b>	<b>103730</b>
CRJ	232	226		86			544
ECE	138	1479		407	2061	385	4470
ENG	7117	15032	275	5942	12547	301	41214
FAH	4261	2750	0	1941	129	119	9200
MAT	335	2764	11978	1625	1713		18415
MGD	466	378		90	493	236	1663
SCI	2961	943	508	1656	2468	112	8648
SOC	7480	5034	516	4041	1990	515	19576
<b>BAT</b>	<b>17730</b>	<b>4818</b>	<b>6770</b>	<b>8418</b>	<b>10009</b>	<b>1021</b>	<b>48766</b>
ASE	13484	1976	246	2775	692		19173
BUS	2407	1056	3212	1099	1355	63	9192
CIS	668	1081	162	877	540	860	4188
CUA	46	164		483	1028	98	1819
HIT	669	190		720	290		1869
MAC	256	172		286	2199		2913
WEL	200	179	3150	2178	3905		9612
<b>CAO</b>				<b>579</b>			<b>579</b>
LIB				579			579
<b>HPS</b>	<b>5233</b>	<b>1527</b>	<b>256</b>	<b>1607</b>	<b>5533</b>	<b>87</b>	<b>14243</b>
COS	1708	136			396		2240
DEH	1278	387		172	893		2730
EMS	644	114	179	496	842	87	2362
FST	40	40		24	286		390
LEA					6		6
OTA	232	412		212	1345		2201
PTA	230	312	35	115	108		800
RCA	105						105
RTE	996	126	42	588	1657		3409
<b>NUR</b>	<b>3994</b>	<b>3980</b>	<b>1172</b>	<b>2955</b>	<b>4003</b>	<b>259</b>	<b>16363</b>
MAP	436	479	75	318	111		1419
NUA	252	763	48	46	824		1933
NUR	2792	2626	1049	1717	2637	259	11080
STE	514	112		874	431		1931
<b>PCC Total</b>	<b>49947</b>	<b>38931</b>	<b>21475</b>	<b>29347</b>	<b>40946</b>	<b>3035</b>	<b>183681</b>

B4. Proportion of Scores Collected by ISLO Category & Department

Div/Dept	ISLO1	ISLO2	ISLO3	ISLO4	ISLO5	PCC Flex
<b>AS</b>	<b>22.53%</b>	<b>28.03%</b>	<b>13.01%</b>	<b>15.47%</b>	<b>20.97%</b>	<b>1.61%</b>
CRJ	42.65%	41.54%	0.00%	15.81%	0.00%	0.00%
ECE	3.38%	36.21%	0.00%	9.96%	50.45%	8.61%
ENG	17.40%	36.74%	0.67%	14.52%	30.67%	0.73%
FAH	46.92%	30.28%	0.00%	21.37%	1.42%	1.29%
MAT	1.82%	15.01%	65.04%	8.82%	9.30%	0.00%
MGD	32.66%	26.49%	0.00%	6.31%	34.55%	14.19%
SCI	34.69%	11.05%	5.95%	19.40%	28.91%	1.30%
SOC	39.24%	26.41%	2.71%	21.20%	10.44%	2.63%
<b>BAT</b>	<b>37.13%</b>	<b>10.09%</b>	<b>14.18%</b>	<b>17.63%</b>	<b>20.96%</b>	<b>2.09%</b>
ASE	70.33%	10.31%	1.28%	14.47%	3.61%	0.00%
BUS	26.37%	11.57%	35.18%	12.04%	14.84%	0.69%
CIS	20.07%	32.48%	4.87%	26.35%	16.23%	20.53%
CUA	2.67%	9.53%	0.00%	28.07%	59.73%	5.39%
HIT	35.79%	10.17%	0.00%	38.52%	15.52%	0.00%
MAC	8.79%	5.90%	0.00%	9.82%	75.49%	0.00%
WEL	2.08%	1.86%	32.77%	22.66%	40.63%	0.00%
<b>CAO</b>	<b>0.00%</b>	<b>0.00%</b>	<b>0.00%</b>	<b>100.00%</b>	<b>0.00%</b>	<b>0.00%</b>
LIB	0.00%	0.00%	0.00%	100.00%	0.00%	0.00%
<b>HPS</b>	<b>36.97%</b>	<b>10.79%</b>	<b>1.81%</b>	<b>11.35%</b>	<b>39.09%</b>	<b>0.61%</b>
COS	76.25%	6.07%	0.00%	0.00%	17.68%	0.00%
DEH	46.81%	14.18%	0.00%	6.30%	32.71%	0.00%
EMS	28.31%	5.01%	7.87%	21.80%	37.01%	3.68%
FST	10.26%	10.26%	0.00%	6.15%	73.33%	0.00%
LEA	0.00%	0.00%	0.00%	0.00%	100.00%	0.00%
OTA	10.54%	18.72%	0.00%	9.63%	61.11%	0.00%
PTA	28.75%	39.00%	4.38%	14.38%	13.50%	0.00%
RCA	100.00%	0.00%	0.00%	0.00%	0.00%	0.00%
RTE	29.22%	3.70%	1.23%	17.25%	48.61%	0.00%
<b>NUR</b>	<b>24.80%</b>	<b>24.71%</b>	<b>7.28%</b>	<b>18.35%</b>	<b>24.86%</b>	<b>1.58%</b>
MAP	30.73%	33.76%	5.29%	22.41%	7.82%	0.00%
NUA	13.04%	39.47%	2.48%	2.38%	42.63%	0.00%
NUR	25.80%	24.27%	9.69%	15.87%	24.37%	2.34%
STE	26.62%	5.80%	0.00%	45.26%	22.32%	0.00%
<b>PCC Total</b>	<b>27.65%</b>	<b>21.55%</b>	<b>11.89%</b>	<b>16.25%</b>	<b>22.67%</b>	<b>1.65%</b>

### Appendix C: Total Rubrics by Department & Level

Div/Dept	Assessment Rubrics				SLOs Represented (not unique)			
	ISLO	PSLO	CSLO	Total	ISLO	PSLO	CSLO	Total
<b>AS</b>	<b>39</b>	<b>105</b>	<b>86</b>	<b>230</b>	<b>167</b>	<b>473</b>	<b>209</b>	<b>849</b>
CRJ	2	6	7	15	2	13	16	31
ECE	5	2		7	22	2		24
ENG	10	65	17	92	31	320	86	437
FAH	3	19	2	24	16	106	12	134
MAT	6	2		8	29	11		40
MGD	1	1	23	25	6	1	24	31
SCI	11	8	27	46	57	12	50	119
SOC	1	2	10	13	4	8	21	33
<b>BAT</b>	<b>53</b>	<b>59</b>	<b>76</b>	<b>188</b>	<b>239</b>	<b>114</b>	<b>167</b>	<b>520</b>
ASE	23	2		25	107	8		115
BUS	10		10	20	50		90	140
CIS	6	11		17	28	14		42
CUA	1	12		13	4	32		36
HIT		20	65	85		20	65	85
MAC	11	8	1	20	41	32	12	85
WEL	2	6		8	9	8		17
<b>HPS</b>	<b>25</b>	<b>48</b>	<b>8</b>	<b>81</b>	<b>51</b>	<b>71</b>	<b>13</b>	<b>135</b>
COS	1			1	6			6
DEH	19	10	1	30	23	10	2	35
EMS	1	16		17	4	16		20
FST	2			2	11			11
OTA	2	8	5	15	7	28	9	44
PTA		2	2	4		2	2	4
RTE		12		12		15		15
<b>NUR</b>	<b>6</b>	<b>43</b>	<b>13</b>	<b>62</b>	<b>26</b>	<b>104</b>	<b>13</b>	<b>143</b>
MAP	3			3	12			12
NUA		4		4		16		16
NUR	2	21		23	8	63		71
STE	1	18	13	32	6	25	13	44
<b>PCC Total</b>	<b>123</b>	<b>255</b>	<b>183</b>	<b>561</b>	<b>483</b>	<b>762</b>	<b>402</b>	<b>1647</b>